

## Straight Handpiece

• MODEL : SDE-ES04, SDE-ES6, SDE-ES100N, SGC-S101

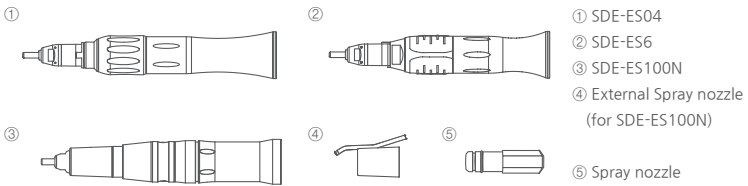
• Please be sure to read this manual before operation.

• This handpiece is designed for dental treatment and oral surgery use by qualified personnel.

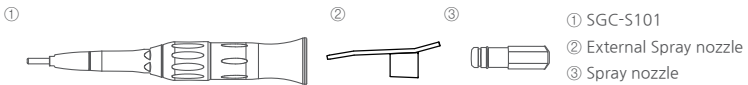
### ⚠ Caution

- When operating the Product always consider the safety of the patient.
- Place the most priority for the safety of all patients.
- When product is found abnormal during use, stop immediately. Do not use, and report to the dealer that product was purchased from.
- Do not modify this equipment without authorization of the manufacturer
- Always watch for vibration, sound, temperature rise, bur wobble, and other abnormalities.
- Disconnect the sheath after the driver unit is in complete stop.
- In case blood or contaminants entered the head, immediately remove the head cartridge and the transmission gear. Clean, sterilize, and lubricate them. Assemble carefully.
- Do not drop or impact.

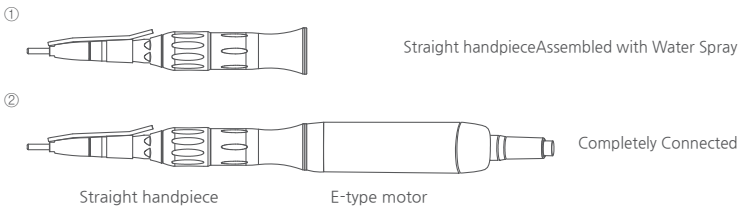
### SDE Series handpiece composition



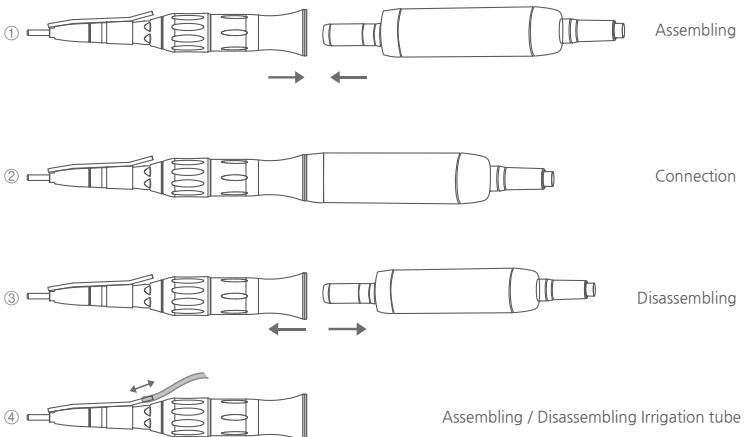
### SGC Series handpiece composition



### 1. Production demonstration



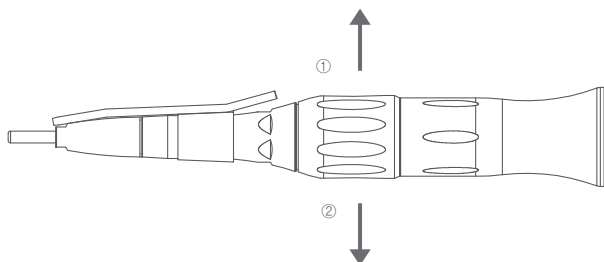
### 2. Operation-Assemble/Disassemble



⚠ Caution Do not assemble or disassemble during operation.

## 2-1. How to connect or disconnect a bur

- Turn the Chuck handle counterclockwise (①) until it clicks to stop to remove/insert the bur
- Turn the Chuck handle clockwise(②) until it clicks to stop before use.

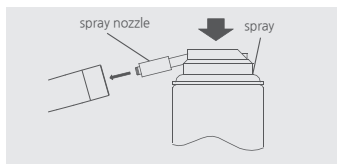


## 3. Cleaning

- After operated the handpiece, please follow below step for cleaning.
- 1) Disconnect the devices of the product to be cleaned.
  - 2) Prepare a cotton with isopropyl alcohol or soft-bristled brush.
  - 3) Use a cloth or brush with isopropyl alcohol to wipe out the foreign objects on the exterior of the devices for at least 2 minutes.
  - 4) Repeat the above procedure again to find the foreign object.

## 4. Lubrication

- After each use, please lubricate the air turbine handpiece and keep it under normal condition.
  - The air turbine handpiece detached from air motor or micromotor should be lubricated as following order.
- 1) Shake the oil spray about 10 times to mix the contents enough, and install the enclosed spray nozzle on the spray.
  - 2) Insert the spray nozzle into the inserting part of the air turbine handpiece.
  - 3) Spray for 2~3 seconds.



### ⚠ Caution

- Grasp the spray nozzle firmly not to be away from the air turbine handpiece by the pressure of spray.

## 5. Autoclave

- Autoclaving is recommended.
- 1) Clean the dust using the brush, and wipe off the air turbine handpiece with the soft cloths wet by alcohol.
  - 2) Lubricate.
  - 3) Place in an sterilization pouch(or sterilization wrap) and seal it.
  - 4) Set the temperature of the autoclave.(4 minute at 132℃, 30minute Dry)
  - 5) Keep the handpiece at a clean condition after autoclaved.

### ⚠ Caution

- Since products that are not sterilized may cause problems such as viruses and cross contamination, they must be sterilized after use.
- Place the air turbine handpiece on the upper or middle tray of the autoclave. If there is the heat generator at the bottom of it, placing the air turbine handpiece at the bottom could cause the possibility that the temperature exceeds a set point.
- Do not place the air turbine handpiece into the autoclave with other contaminated instruments by chemical substances to prevent discoloration or corrosion of its plating.
- It is necessary for the users to operate our products by following the maintenance requirements in this manual. The manufacture is not responsible for any accident or problem caused by not following the manual.
- The device consists the durability of at least 250 sterilization cycles.

**saeyang**

(Galsan-dong), 348, Seongseo-ro, Dalseo-gu, Daegu, 42697, Korea  
TEL +82-53-582-9001 FAX +82-53-581-9003

Website : [www.saeyang.com](http://www.saeyang.com)  
E-mail : [marathon@saeyang.com](mailto:marathon@saeyang.com)

EC REP  
MARATHON ITALIA SRL  
VIA NUOVA SAN ROCCO, 62 80131 NAPOLI,  
ITALIA

CE  
1639

JUNE, 2020

2010-STH-EN-01

Rev. 6-E