

Pocket Power

OWNER'S MANUAL



**POCKET POWER IS SOLEY DESIGNED FOR
PROFESSIONAL NAILS MANICURE**

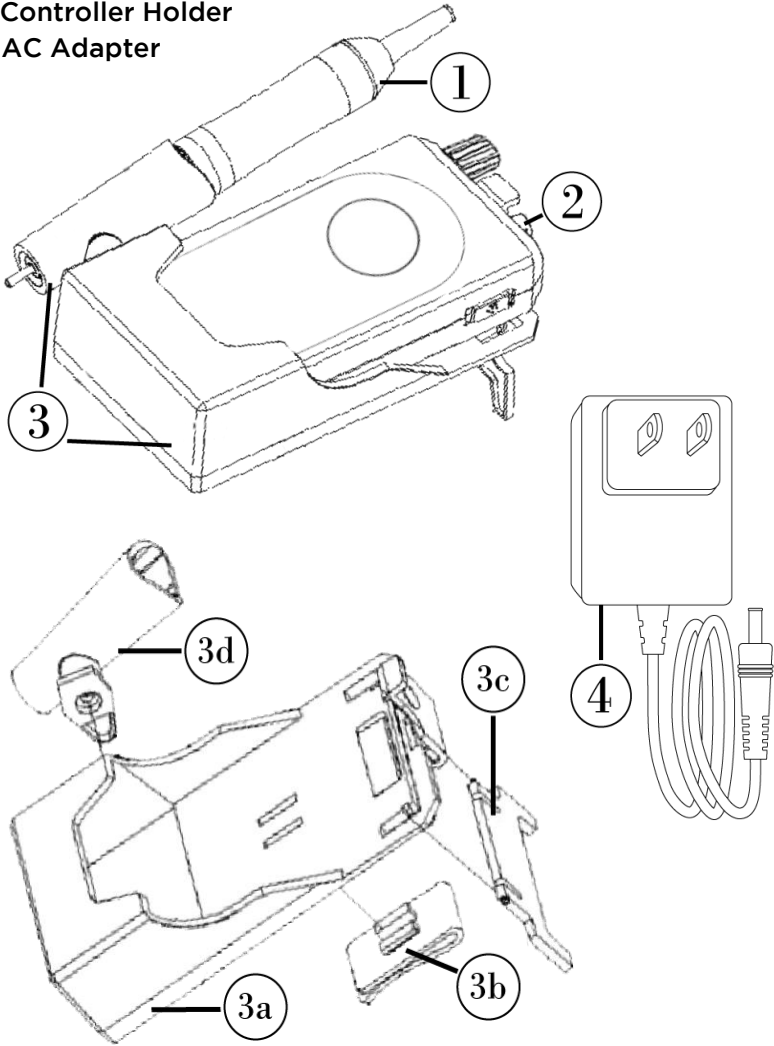
 **RAM PRODUCTS, INC.®**

182 Ridge Road, Suite D Dayton, N.J 08810

 732.651.5500  732.651.6688  ram@ramhp.com  www.ramhp.com

CONTENTS AND POCKET POWER COMPONENTS

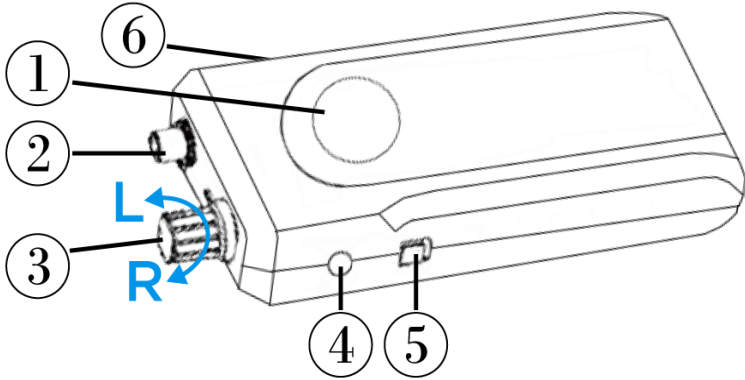
- 1. Handpiece
- 2. Controller
- 3. Controller Holder
- 4. AC Adapter



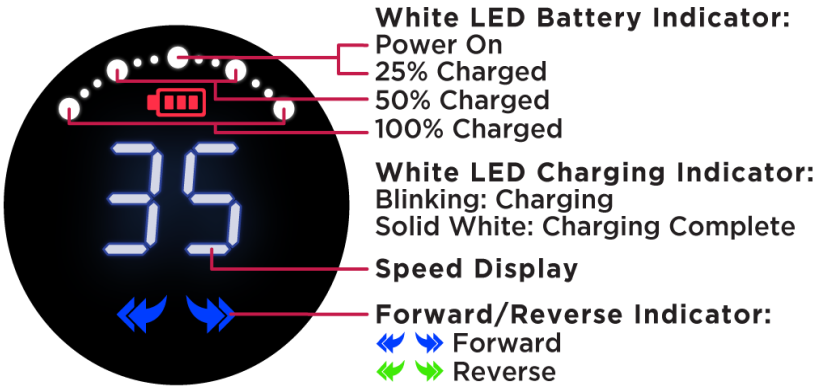
- 3a. Transparent Controller Holder
- 3b. Belt Clip
- 3c. Tilt Stand
- 3d. Adjustable Handpiece Holder

POCKET POWER CONTROLLER

1. LCD Digital Display
2. Handpiece Connector
3. On/Off and Speed Control
4. Optional Foot Pedal Connector - Ram Item #PKTPWRON/OFFPEDAL
5. AC Charging Connector
6. Forward/Reverse Slide Switch



POCKET POWER CONTROLLER OPERATION



- Upon turning power on, display will illuminate.
- To turn controller on, turn Speed Control knob clockwise (to the right) and counter clockwise (to the left) to turn off.
- To increase speed, turn Speed Control knob clockwise (to the right) and to decrease speed, turn counter clockwise (to the left).
- Always turn off when not in use.

BATTERY TIP:

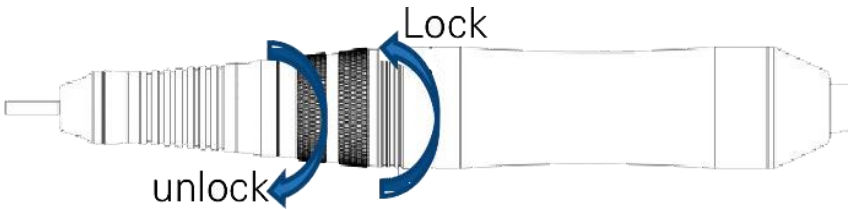
- Do not charge for more than 12 hours.
- When the battery goes below 25%, it will be indicated by a red flash on battery indicator and we suggest for you to charge as soon as possible.

•CHANGING BITS

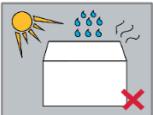
1. Turn off the power and ensure the rotation has stopped before changing bits.
2. Using your right hand, hold the handpiece with your left hand with the tip pointing upward.
3. Use your right hand to turn the metal set ring towards you, as indicated by the unlock icon on the motor.
4. The chuck should be in the open position and ready to accept a new bit.
5. Turn the metal set ring away from you, as indicated by the lock icon on the motor.

NOTE:

Ensure the collet chuck is locked with the blank mandrel supplied or a bit to prevent motor damage. Try spinning the blank mandrel by hand as well as pulling on it to make sure it is securely locked.



•CAUTION AND SAFETY



1. This product uses a Lithium-ion battery. When not in use, store in a dry, well ventilated place. Avoid high temperature and direct sunlight.



2. Always wear a dust mask and eye protection for safety.



3. Avoid from touching any bits while the handpiece is rotating.



4. Do not use any bits that are bent or eccentric and we suggest using good quality bits.

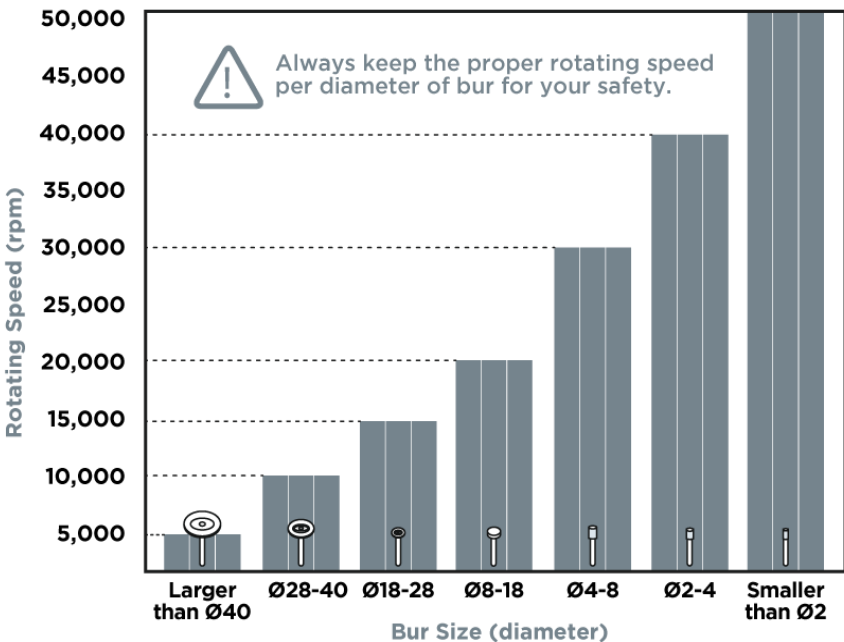


5. Only use the original factory AC adapter for charging. Ensure the power cord is in good condition and has no exposed wires before charging.



6. Be sure to observe the safety speed as per manufacturer's specifications.

SAFE SPEED RANGE



Diameter of bur: 3/32" (2.35mm),
3mm (3.0mm), 1/8" (3.175mm)



After sanitizing bits, make sure they are completely dry before using to avoid getting any chemicals in the handpiece which may inhibit rust.

ERROR CODES

If the micromotor is used improperly, the LCD display screen will display the corresponding error code.

	Possible Causes:
E1 - Lock Rotation:	<ul style="list-style-type: none">• Set Ring is in the open position• Bit not properly installed• Handpiece connector or cord issue <p>→ Turn speed knob on and off. If the problem is resolved, this will clear the error.</p>
E2 - Overload:	<ul style="list-style-type: none">• Over current error codes can occur when heavy loads are applied for a long period of time. <p>→ Turn speed knob on and off. If the problem is resolved, this will clear the error.</p>
E3 - Over Heating:	<ul style="list-style-type: none">• If controller overheats due to extreme or excessive use, wait 20 minutes for the unit to cool down. <p>→ Turn speed knob on and off. If the problem is resolved, this will clear the error.</p>

SPECIFICATIONS:

CONTROLLER:

Size: 5.5" x 2.7" x 0.67"
Weight: 9oz.
LCD Display Screen

HANDPIECE:

Size: 5.65" x .78"
Weight: 3.2 oz.
0-35,000 RPM Brushless Motor

BATTERY:

Input: 100-240V-56/60Hz Output: 12.60V 950mA

WARRANTY PERIOD

Warranty is valid within the United States only.

ELECTRICAL EQUIPMENT - These products are under warranty for a period of ONE YEAR from the date of original installation by the purchaser.

HANDPIECES - These products are under warranty for a period of SIX MONTHS from the date of original installation by the purchaser. IT DOES NOT COVER MISUSE, NORMAL BEARING, OR CARBON BRUSH WEAR.

IN HOUSE OR FACTORY REPAIR - WARRANTY CLAIMS - Please visit our website, www.ramprodinc.com, to download the Customer Service Request Form located at the bottom of the website page. For warranty claims, please include a copy of your invoice or refence purchase date.

It is your responsibility to get the unit to us. Return shipping and handling is covered by Ram Products, Inc.

PRODUCT WARRANTY

All returned items shall be free from defects/alterations in material, workmanship and original product design.

- The product shall have been used under the conditions for which it has been intended, and in a manner for which it has been designed.
- The product shall have been operated in a manner for which it was intended and in the proper environmental conditions.
- The customer must maintain the product as specified within the individual product instruction booklet.

Electrical and mechanical equipments which are mishandled, used incorrectly, and/or used for a purpose other than that for which they were designed and intended, will void the product warranty.

WARRANTY CLAIMS

Should your product require service within the warranty period, we will elect to make the necessary repair or replacement at no charge including return shipping. It is your responsibility to safely pack and return the product to Ram Products. it is also recommended that returns have tracking information and to be adequately insured against carrier loss or damage.

All claims should describe the specific problem for evaluation. For all warranty requests, please include a copy of your purchase invoice.

SERIAL NO.: _____
PURCHASE FROM: _____
PURCHASE DATE: _____
INSTALLATION DATE: _____

WARRANTY REGISTRATION

Register online at www.ramhp.com/warranty

In order to validate your warranty, this card must be filled out completely and mailed within 10 days of purchase/installation.

PLEASE PRINT OR TYPE

NAME: _____

ADDRESS.: _____

CITY: _____

STATE: _____ ZIP CODE: _____

PRODUCT:

SERIAL NO(S):

PURCHASE DATE:

DEALER NAME AND ADDRESS:

The short survey below is designed to improve the service and quality of product supplied to our customers.

Did the item arrive in a satisfactory condition? YES or NO?

If NO please explain:

Did the instruction manual provide all details clearly for proper installation and operation? YES or NO? If NO please explain:

What factor(s) were involved in your decision to purchase this product:

- Advertisement Previous Purchase of a Ram Product
 Distributor Recommendation Recommendation by Colleague

Any feedback, comments or suggestions:

Thank you for your feedback.



RAM PRODUCTS, INC.®

182 Ridge Road Suite D, Dayton, NJ 08810

📞 1-732-651-5500

🌐 www.ramhp.com

📠 1-732-651-6688

✉️ ram@ramhp.com

