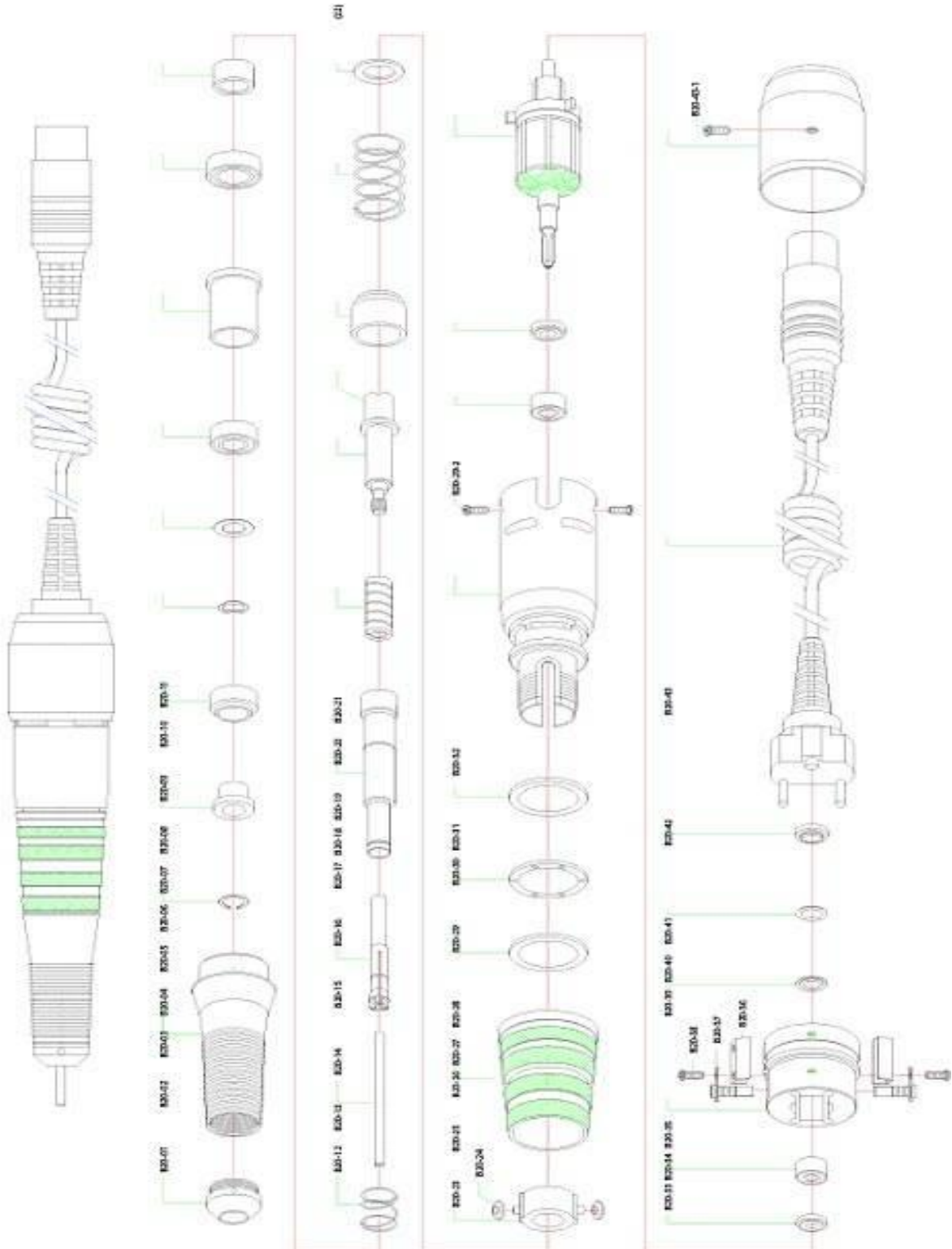


SCHEMATIC FOR PRIMO NAILS HANDPIECE



PRIMO NAIL DRILL



Primo

- Comes with Primo Control box, Primo handpiece, On-off foot pedal, a Handpiece stand, and a Wrench Tool
- Primo handpiece with quick bur release
- Forward – reverse direction
- Variable speed control dial
- One (1) year warranty on box and foot pedal, six (6) month warranty on the handpiece

ASSEMBLY and OPERATION

1. Handpiece cord plugs into the lower right socket marked output on the control box.
2. Foot pedal plugs into the back lower right socket on the control box.
3. Plug the power cord to an electrical outlet. Make sure that the outlet is properly grounded and compatible to the voltage input requirement.

NOTE: Please check the power switch. It must be in “off” position before plugging the power cord to an electrical outlet. The speed control must be set to minimum.

4. Turn the power switch (located at the upper left corner of the control box) to “on” position. The green light should glow.
5. Press the foot pedal and the handpiece is now ready for operation.

WARNING: The handpiece should always be placed in the rubber stand when not in use to avoid rolling or dropping. Permanent damage may occur to the handpiece.

6. The speed control is located at the upper right corner at the front of the control box. To speed up the rotation of the bur, turn the dial knob to the right and to decrease the speed, turn the dial to the left.
7. The direction of the turn of the bur is controlled by the switch located at the upper center of the control box. The bur turns clockwise (right) when the switch is pressed to R and turns counterclockwise (left) when pressed to L.

A. USE & OPERATION OF THE CHUCKING MECHANISM

1. When you first receive your primo nail, you will see a “blank” bur already inside your handpiece.
2. With the drill held upright (front of the drill pointing at the ceiling). In your left hand, you will be able to open the chucking mechanism using your right hand.
3. As you can see from the outside of the handpiece, it is made up 4 complete metal sections. Your left hand should be holding the bottom two metal sections. Now, with your right hand, take your thumb and index finger and turn the set ring (the 2nd section of metal from the top part of the drill/part #B2025). Turn the set ring clockwise until you hear it click. Once you hear the click, your chuck is now in the open position to allow you to remove the blank bur and change it for one of your own.
4. When installing one of your own burs into the primo nail drill, please leave a little bit of room between the bottom of the bur head and the top of the chuck. If the bur is rubbing or seated on top of the chuck you may lock up the drill and keep it from spinning.

5. After installing your drill bit, turn the set ring counter clockwise to lock the drill bit in place. You are now ready to use the drill.

Please note: The wrench enclosed with your nail drill is not needed to open or close the chucking mechanism. This handpiece wrench is only used for repair service.

B. USE & OPERATION OF ON/OFF FOOT PEDAL CONTROLS

1. First make sure the on/off foot pedal is plugged in properly into the back of the control box in the foot pedal socket.
2. In order to operate the foot pedal, control box must have the power switch set to the “off” position.
3. With the power switch turned off, you will now be able to operate the foot pedal, as an on/off switch. This pedal will only turn the unit on up to the setting or placement of the control box speed control knob.
4. When the power switch on the control box is turned on, the foot pedal will not operate.

C. INSTRUCTIONS FOR CHANGING BRUSHES for Primo Handpiece

The brushes are located in the back of the handpiece, in the section closest to the power cord.

- 1) Remove the two small Philips type set screw on the sides of the metal end cover
- 2) Remove both of the old brushes using a small Phillips head screwdriver. Remove the two screws holding the brushes – one on each side and the brushes are easily removed.
- 3) Insert the new brushes and secure with the two Phillips head screws and attach the rear cover.
- 4) New brushes may take several hours during the break in period where the handpiece may run slightly warmer than usual.

Warning: DO NOT use handpiece without the bur or chuck properly secured. Permanent damage to the motor is possible.
--

Replacement chucks: 3/32” -2.35mm - Part #B20-14

D. SUGGESTED MAINTENANCE

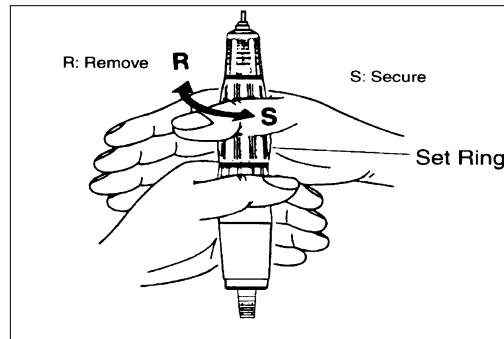
1. Carbon brushes in handpiece motor are designed for long life (approximately 1,000 hours). Carbon brushes should be replaced periodically (approximately 1 year). Replacement part # is T02-37.
2. Keep clean from dust and grindings as best as possible.
3. Wipe handpiece only with isopropyl alcohol and avoid getting inside wet. It is normal for the using rusty or eccentric burs as this will cause excess wear on the bearings. Follow safety speeds and precautions recommended by the bur manufacturer. Always wear a dust mask, eye protection, and use adequate suction or ventilation.
4. Do not drop the handpiece at any time as this may cause damage to the bearings. In the event the handpiece is dropped, please check that the bur is not bent and resume use carefully, checking for excess noise or heat. If any damage, please return to manufacturer for service.

E. PRECAUTIONS

1. When using electric tools, use basic safety precautions in order to reduce risk of fire, electric shock, and personal injury.
2. Do not expose electric tools to water, or use in damp or wet locations.
3. Do not wear loose clothing or jewelry as they can be caught in the drill.
4. Do not attempt to service or repair handpiece, control box, or the foot pedal. There is no user serviceable part in the equipment other than changing the motor brushes or handpiece cord. Repair should be referred to the manufacturer, dealer or authorized service center.
5. Do not oil, lubricate, or grease the handpiece (This will only lead to further damage of the greased sealed bearings).
6. Do not attempt to open collet (release bur) while handpiece is running.
7. Do not switch forward or reverse direction until motor has completely stopped.
8. Do not sterilize or autoclave. Do not get handpiece wet (except for the front-end attachments with the "E"-type motor).
9. When machine is not in use, power switch should be turned off.
10. Do not run handpiece without a bur properly locked in place

WARNING:

NEVER TURN SET RING
WHILE MOTOR IS ROTATING.
PERMANENT DAMAGE TO
THE MOTOR IS POSSIBLE.



TECHNICAL TIPS

A quality drill is meant to last years and years with basic user maintenance and periodic tune up or service from the factory where only original parts are used to replace normal wearing parts. It is a good idea to send it for service when symptoms start to occur before it gets worse or damages other internal parts. Listen to your drill.

Keep the dust out of the drill as best as possible and use good quality bits that are well balanced and vibration free. This is especially true for the sanding bands holders as they seem to cause the most wear on the handpiece.

Keep a spare set of carbon brushes or an extra cord for the handpiece or a set of fuses to fix any minor emergency and avoid ruining your day.

PARTS LIST FOR PRIMO HANDPIECE

<u>RAM ITEM #</u>	<u>PART #</u>	<u>DESCRIPTION</u>
B2001	B20-01	Nose Tip
B2002	B20-02	Sheath
B2003	B20-03	C-clip
B2004	B20-04	Collar
B2005	B20-25	Dust Seal
B2006	B20-06	Wave Washer
B2007	B20-07	Washer
B2008	B20-08	1260ZZ Ball Bearing
B2009	B20-09	Bushing
B2010	B20-10	1480ZZ Ball Bearing
B2011	B20-11	Spring Guide
B2012	B20-12	Coil Springs
B2013	B20-13	Blank Mandrel
B2014	B20-14	Chuck-3/32" (2.35) mm Standard
B2015	B20-15	Chuck Case
B2016	B20-16	Chuck Spring
B2017	B20-17	Chuck Joint With Delrin
B2018	B20-18	Spring Cover
B2019	B20-19	Coil Spring
B2020	B20-20	Flat Washer
B2021	B20-21	Flat Washer
B2022	B20-22	Roller Ring
B2023	B20-23	Rollers For Roller Ring
B2024	B20-24	Set Ring
B2025	B20-25	Thrust Ring
B2026	B20-26	Thrust Bearing
B2027	B20-27	Thrust Ring
B2028	B20-28	Motor Case
B2029	B20-29	Motor Screw
B2030	B20-30	940ZZ Ball Bearing
B2031	B20-31	Front Armature Spacer
B2032	B20-32	Armature
B2033	B20-33	End Armature Spacer
B2034	B20-34	830ZZ Ball Bearing
B2035	B20-35	Brush Holder
B2036	B20-36	Terminal Clip
B2037	B20-37	Square Carbon Brushes
B2038	B20-38	Brush Holder Motor Screw
B2039	B20-39	Brush Holder Space
B2040	B20-40	Rubber O-Ring
B2041	B20-41	Motor Cap Screw
B2042	B20-42	Plug-In Cord Assembly
B2043	B20-43	Motor Cap
B20431	B20-43-1	Motor Cap Screw