



182 Ridge Road, Suite D Dayton, N.J. 08810
www.ramprodinc.com | Phone: 1-877-RAM-PROD / 1-732-651-5500

TECH2000 / 45000



INSTRUCTION MANUAL

Contents

INSTRUCTIONS FOR CHANGING BRUSHES	2
INSTRUCTIONS FOR CHANGING CHUCKS	3
MAINTENANCE.....	4
PRECAUTIONS.....	5
PARTS LIST FOR HANDPIECE.....	6
SCHEMATIC DIAGRAM.....	7



A. INSTRUCTIONS FOR CHANGING BRUSHES FOR TECH 2000 / 45,000 RPM HP

The brushes are located in the back of the handpiece, in the section closest to the power cord.

- 1) Hold the front section of the handpiece with one hand and unscrew the rear cover (1¼" long ring) at the back of the handpiece with the other hand.
- 2) Remove both of the old brushes using a small Phillips head screwdriver. Remove the two screws holding the brushes – one on each side and the brushes are easily removed.
- 3) Insert the new brushes and secure with the two Phillips head screws and attach the rear cover.
- 4) New brushes may take several hours during the break in period where the handpiece may run slightly warmer than usual.

B. INSTRUCTIONS FOR CHANGING CHUCKS FOR TECH 2000 / 45,000 RPM HP

The Tech 2000 and 45,000 RPM handpiece were designed for ease and simplicity in changing chucks.

- 1) Turn set ring (part #102WL-10) clockwise to open the chuck (towards you).
- 2) Using the wrench tool (included with handpiece), place the triangle section of the wrench over the top of the chuck turning counter-clockwise until the chuck is completely unscrewed and is loosened from the spindle.
- 3) Insert a different size chuck or replacement chuck and using the chuck wrench tool with the triangle section over the top of the chuck, turn the wrench tool clockwise until the chuck is completely tightened. (Before adjusting the chuck, make sure there is a blank bur inside).

B. INSTRUCTIONS FOR CHANGING CHUCKS FOR TECH 2000 / 45,000 RPM HP

- 4) Final adjustment of the chuck is needed by turning the wrench tool approximately ¼ turn counter-clockwise (to loosen the chuck).
- 5) Turn set ring counter-clockwise (away from you) to lock or secure chuck and bur or mandrel.
- 6) Check carefully to make sure the bur is securely held by the chuck by gently pulling on the bur or mandrel. The bur should be firmly locked in place.
- 7) If the bur is not tightened properly and secured, repeat steps 4 and 5. If the bur is easily removed while the chuck is closed, the chuck needs to be tightened. If the chuck does not properly lock the bur or if it is difficult to remove the bur when the chuck is locked then the chuck needs to be loosened slightly by using the wrench tool counter-clockwise.

Note: Please do not remove nose cone section or remove the complete spindle assembly.

Warning: DO NOT use handpiece without the bur or chuck properly secured. Permanent damage to the motor is possible.

Replacement chucks:	3/32" -2.35mm	-	Part #T02L-13
	3mm	-	Part #T02L-13A
	1/8" -3.17mm	-	Part #T02L-13B



C. SUGGESTED MAINTENANCE

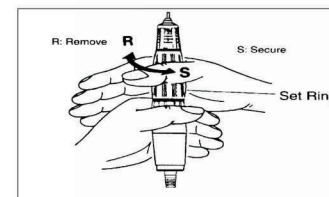
1. Carbon brushes in the handpiece motor are designed for long life (approximately 1,000 hours). Carbon brushes should be replaced periodically (approximately 1 year). Replacement part number is # 8508.
2. Keep clean from dust and grindings as best as possible.
3. Wipe handpiece only with isopropyl alcohol and avoid getting inside wet. DO NOT use rusty or eccentric burs as this will cause excess wear on the bearings. Follow safety speeds and precautions recommended by the bur manufacturer. Always wear a dust mask, eye protection, and use adequate suction or ventilation.
4. Do not drop the handpiece at any time as this may cause damage to the bearings. In the event the handpiece is dropped, please check that the bur is not bent and resume use carefully, checking for excess noise or heat. If any damage, please return to manufacturer for service.

D. PRECAUTIONS

1. When using electric tools, use basic safety precautions in order to reduce risk of fire, electric shock, and personal injury.
2. Do not expose electric tools to water, or use in damp or wet locations.
3. Do not wear loose clothing or jewelry as they can be caught in the drill.
4. Do not attempt to service or repair the handpiece, control box, or the foot pedal. There is no user serviceable part in the equipment other than changing the motor brushes or handpiece cord. Repair should be referred to the manufacturer, dealer or authorized service center.
5. Do not oil, lubricate, or grease the handpiece (This will only lead to further damage of the greased sealed bearings).
6. Do not attempt to open the collet (release bur) while handpiece is running.
7. Do not switch forward or reverse direction until motor has completely stopped.
8. Do not sterilize or autoclave. Do not get handpiece wet (except for the front-end attachments with the "E"-type motor).
9. When machine is not in use, power switch should be turned off.
10. Do not run the handpiece without a bur properly locked in place

WARNING:

NEVER TURN SET RING
WHILE MOTOR IS ROTATING.
PERMANENT DAMAGE TO THE
MOTOR IS POSSIBLE.



Ram Products, Inc. 182 Ridge Road, Suite D Dayton, N.J. 08810
Phone: 1-877-RAM-PROD / 1-732-651-5500 Fax: 1-732-651-6688
or e-mail us at ram@ramhp.com Monday thru Friday 8:30 – 6:30 EST

**Prices are subject to change without notice*

RAM PRODUCTS INC. *The Source for Quality Approved Products*

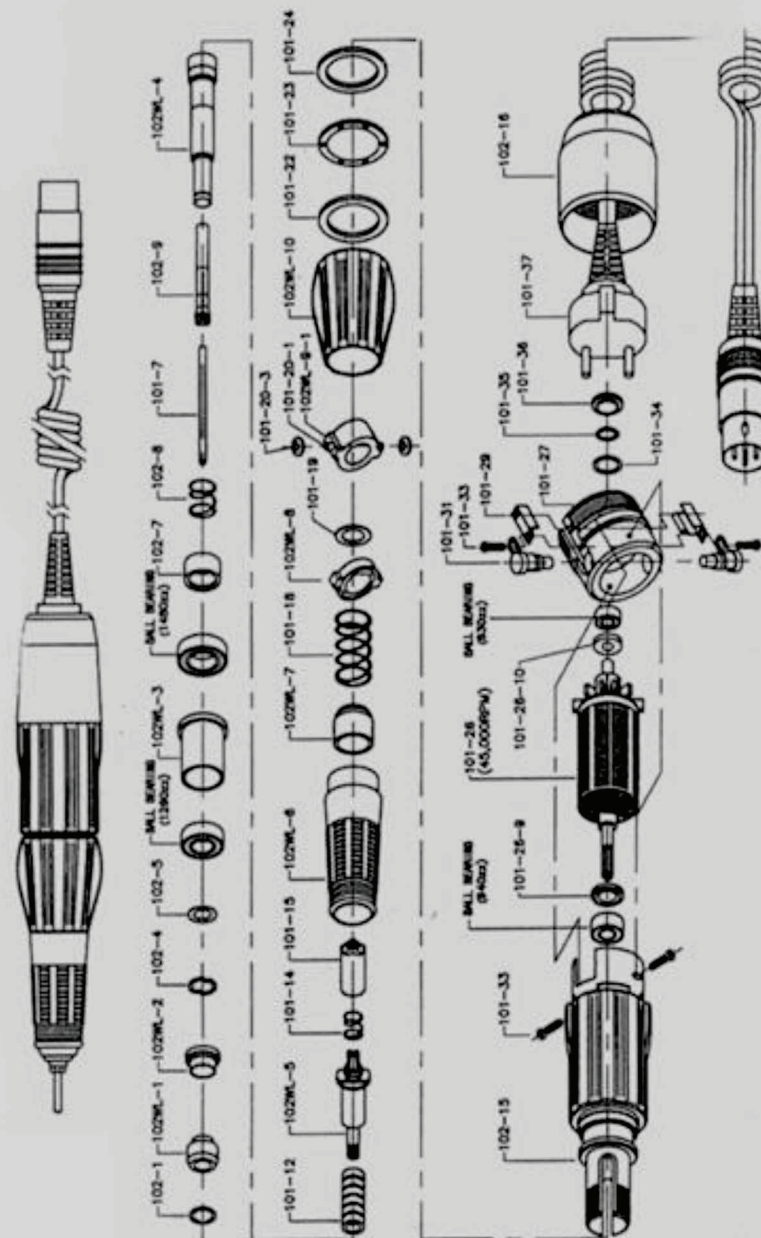
PARTS LIST FOR TECH2000 / 45000 HANDPIECE

ITEM #	DESCRIPTION
102-1	Front C Clip
102WL-1	Dust Seal A
102WL-2	Dust Seal B
102-4	Wave Washer
102-5	Dust Shield for Bearing
8534	1260ZZ Ball Bearing
102WL-3	Bushing For Spindle
8537	1480ZZ Ball Bearing
102-7	Rear Spindle Collar
102-8	Rear Spindle Collar Spring
101-7	Blank Mandrel
T02L-13	3/32" (2.35mm) Standard Chuck (102-9)
T02L-13A	3mm Collet Chuck
T02L-13B	1/8" (3.17mm) Collet Chuck
T02L-13C	1/16" (1.60mm) Collet Chuck
102WL-4	Main Spindle Shaft
102-12	Coil Spring
102WL-5	Chuck Joint
101-14	Spring For Delrin Joint
101-15	Delrin Joint Fitting
102WL-6	Front Brass Sheath
102WL-6A	Plastic For Brass Sheath
102WL-7	Spring Cover
101-18	Coil Spring
102WL-8	Cam For Multichuck Feature
101-19	Flat Washer
102WL-9	Roller Ring
102WL-10	Set Ring
101-22	Thrust Ring
101-23	Thrust Bearing
101-24	Thrust Ring
102-15	Motor Housing
102-15A	Plastic For Motor Housing
101-33	Brush Holder Screw
8504	940ZZ Front Motor Bearing
101-26-35000	35,000 RPM Motor
101-26-45000	45,000 RPM Motor
8506	830ZZ Rear Motor Bearing
101-27	Carbon Brush Holder
101-29	Terminal Clips
8507	Round Carbon Brushes (Older Models)
8508	Square Carbon Brushes (Newer Models)
101-3	Brush Holder Screws
101-34	Brush Holder Spacer
101-35	Rubber D-Ring
101-36	Brush Holder Cap Screw
101-37	Plug-In Cord Assembly
102-16	Motor End Cap

6

7

TECH 2000 HANDPIECE / 45000 HANDPIECE



Ram Products, Inc. 182 Ridge Road, Suite D Dayton, N.J. 08810
 Phone: 1-877-RAM-PROD / 1-732-651-5500 Fax: 1-732-651-6688
 or e-mail us at ram@ramhp.com Monday thru Friday 8:30 - 6:30 EST

*Prices are subject to change without notice

RAM PRODUCTS INC. The Source for Quality Approved Products