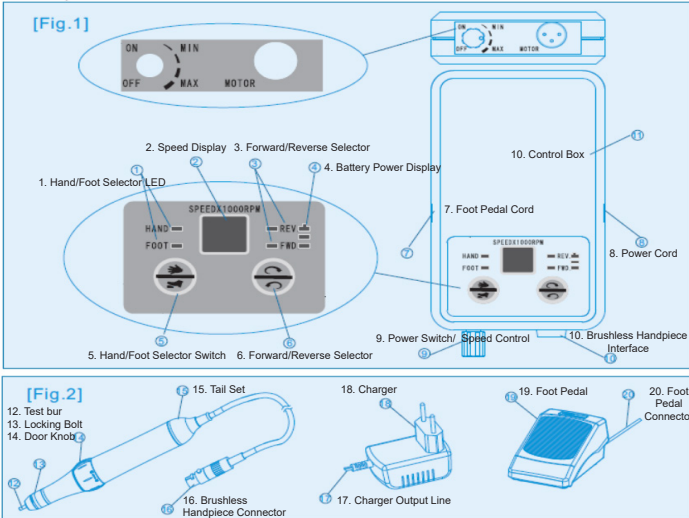


# WHISPER MICRO MOTOR USER MANUAL

Thank you for purchasing our product, please read the product instructions carefully before using this product. For Professional use only. Please note this manual is intended as a reference only. For your safety, please read the instructions carefully and keep away from children.

## 1. Compositions:



## 2. Specifications

MODEL	INPUT	OUTPUT	POWER	WEIGHT	DIMENSION (mm)	
JD6G	DC12.6V	1A	DC12V	35W	258g	130.5x75.7x27.3

MODEL	Battery voltage	Battery capacity	Working temperature	Storage temperature	WEIGHT	DIMENSION (mm)
Lithium battery	DC11.1V	2200mAh	10°C~45°C	-20°C~35°C	135g	70.7x55.5x20

SPEED	DIMENSION (mm)				WEIGHT
	L1(mm)	L2(mm)	L3(mm)	D(mm)	
MAX 30000 RPM	62.2	66	148.9	φ 22	170g

Standard accessories: control box, handle, charger, foot pedal

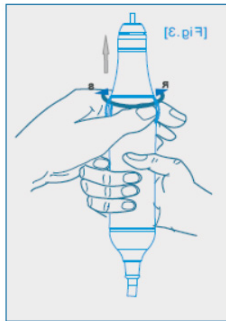
## 3. Operation Instructions

Replace grinding head bit [Fig. 3]  
This machine comes standard with chuck diameter 2.35mm, other sizes available upon request.

1) Hold the handle, the handle locking pin knob to the "R" direction rotating chuck is opened, first to pressure pin, and then remove pin.

2) The new grinding rod insertion at the bottom of the chuck, then turn the knob to the "s" in the direction of the spin lock tight head rod, ensure locking is firm.

3) To ensure the finger is placed in the right position, the chuck can rotate freely.



### Caution when using handpiece:

1. Before installing a new bit, please turn the power off.
2. Please choose to use the standard grinding head, please do not use a bit that is bent or damaged.
3. Please make sure that the grinding bit is inserted to the bottom of the clamping chuck, then the grinding bit and make sure it is secure before use.
4. To ensure that the grinding bit moves to a new location, the collet can be firmly clamping head handle
5. Please lock chuck, begin to use, in the starting handle, please hold it
6. When the handpiece is running, please do not unscrew the rotating chuck, please do not touch any parts of rotating machine.
7. While handpiece is running, if any abnormal movement or noise is found, please stop using it immediately
8. When the handpiece is not running, we recommend the use of a test head handle is inserted to the handle holder.

## 4. Product Features

1. Low noise, long life, no brush handle and brushless control system.
2. Speed memory function and speed digital display.
3. Manual / foot mode can freely switch.
4. Built-in high capacity rechargeable lithium battery for long working hours.
5. Overload protection.

## 5. Install

1. Insert the charger output interface into the power input interface of the control box.
2. Insert charger into power supply.
3. Insert the connector of the brushless motor handpiece into the interface of the control
4. Adjust the power switch/speed control knob to the "ON" position.
5. Press "HAND/FOOT" button to "HAND" mode, and "HAND" mode LED indicator light is turned on.
6. Choose the "FWD/REV" button, press one time and the direction will change.

## 6. Operation Instruction

1. Turn on the power switch, control box beep sound, the default system is the previous operation and "hand" mode, and the indicator lights are in work. The speed of the screen is displayed on instand speed.
2. Two ways of adjusting speed: speed control knob and foot pedal.
3. Adjust "the speed control knob" to the desired speed.
4. When the grinding machine is in the work, if press the "FWD/REV" select key, the control system will be in Three seconds after the shutdown. Then the "FWD/REV" will switch to another mode while the corresponding LED lights will shine. After about two seconds the grinding machine will slowly accelerate into the setting speed.
5. When the grinder is running, if press "HAND/FOOT key, the control system will be shutdown in a second, and then the HAND/FOOT will choose to cut Switch to another mode, and the corresponding LED light will shine. After about two seconds the grinding machine will slowly accelerate until the setting speed.

## 7. Foot Operation Instructions

1. The foot pedal power cable is inserted into the foot of the control box.
2. Switch manual/foot button to FOOT (F) mode.
3. Unscrew the speed control knob.
4. The foot pedal to make the grinding machine operation.
5. Select "FWD/REV" reversing switch: press once, positive / reverse direction will change.

### Caution when using the control box:

- please select your input source by the rated voltage as indicated in the control box panel.
- at work, please gradually adjust its speed, avoid sudden sharp adjustment.
- please stop the grinding machine before the operation is / reverse choose to switch the direction rotation.
- don't let the control box stay in standby for a long time. This may cause trouble or malfunction.
- to work with safety and efficiency, please adjust to the appropriate speed.
- when not using the product, please turn off the control box, unplug the power and the handle, while keeping the product clean

### Caution of using the Lithium Battery:

1. Lithium battery is expendable item, if it's life expired. Please contact local supplier to change with new battery.
2. If the battery level is low, please stop using handpiece and recharge battery.
3. Avoid contact with corrosive substances, keep away from fire and other heat sources.
4. Do not damage the battery, please avoid any high impact as it can damage the battery.
5. Do not remove the battery shell package which could cause the battery to short circuit and cause leakage, fire and or explosion.
6. Please stop use if the battery leaks, discoloration or other changes occur.
7. If you come in contact with battery liquid, please rinse eyes with water, do not wipe if battery liquid comes in contact with eyes or skin. Please seek medical attention immediately if liquid went into your eyes.
8. Please clean up with clear water well in case the battery liquid has touched your skin and clothes.

### Warning:

1. Please use the product charger properly.
2. Please do not charge under 0 degree and over 40 degrees temperature.
3. Please charge in well and dry ventilated condition.
4. Do not touch the plug with wet hands to avoid electric shock.
5. Please do not charge in close to flammable liquid and gas.
6. Please use the protection lasses while working, please use the protection mask at the work in dusty environment.
7. When control box heated up or found any abnormal conditional, please contact local supplier for inspection, and repair.
8. If the wire breakage resulting in leakage, please stop using it immediately, and promptly notify the supplier or designate repair services.
9. Please never repair by yourself, it cause accident and injury. Please contact local supplier for repair and inspection.

## 8. Trouble shooting

Troubles	Cause	Remedy
Motor fails to run	1. Loose connection motor plug with jack in control box	Correct plug the Motor cord
	2. Defect in Motor cord	Replace Motor cord
	3. Trouble in Motor	Check motor and repair if the motor is troubled.
Motor stops suddenly in use. (Safety protection system functioned.)	Overloaded, or chuck is opened during operation.	check the chuck and close the chuck if opened
Display F2	1. foot pedal without connect	connect the foot pedal
	2. Foot Pedal fails to function.	check and replace Foot Pedal
Display F1	3. overcurrent protection	Stop working and restart
Display F0	4. Loose connection Foot Pedal plug with jack in control unit.	Check Foot Pedal plug and connection.
Display F0	5. overload protection	Stop working and restart

## 9. Knowledge Introduction

Handpiece	Brushless	Brushes
Working principle	Electronic chip non-contact drive	Brushes and a commutator drive
Producing sparks	No	Exist
Producing dust	No	Exist
The impact of dust	No	Dust into the interior of the bearing, affecting bearing life
Energy consumption	Convert electrical energy into mechanical energy, high efficiency	It will sparks at work, some energy is converted into heat energy, low efficiency
When fully charged the battery, how much time you can use in no-load	10h	6h
Motor life	15000h	2000-3000h

The above specifications may be changed without previous notice